

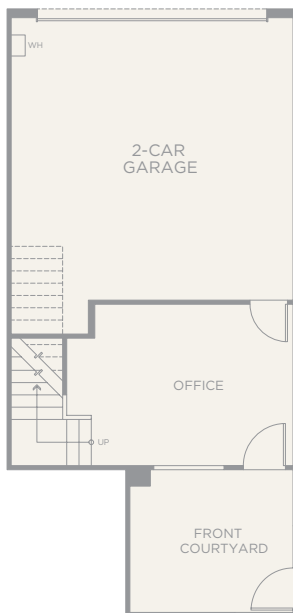
# Sterling

TRIPONTE HOMES

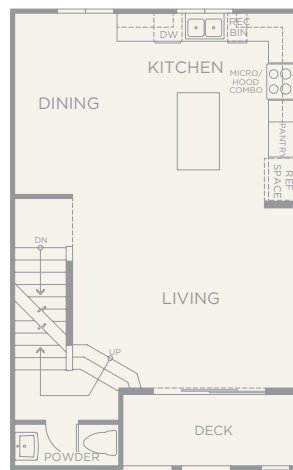
RESIDENCE 1

1,385-1,426 sq. ft. | 2 Beds + Office | 2.5 Baths | 2-Car Garage | Three-story

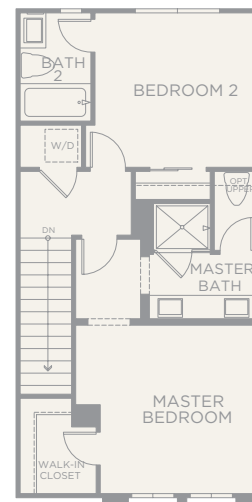
1<sup>ST</sup>  
FLOOR



2<sup>ND</sup>  
FLOOR



3<sup>RD</sup>  
FLOOR



tripointehomes.com

Parasol Park™  
At Great Park Neighborhoods 

Floor plans are preliminary and are subject to change without notice. Stated square footage is approximate and should not be used as a representation of the home's precise or actual size. Please see the actual purchase agreement for additional information, disclosures, and disclaimers relating to a home and its features. A link to a third party website does not imply endorsement of that site nor any ability to control that site's privacy practices. No information or material in this email is to be construed to be an offer or solicitation for sale. You must visit a Company New Home Gallery to purchase a home. Please consult a New Home Advisor for specific price and other information for each community. Our name and logos are registered trademarks or trademarks of TRI Pointe Group, Inc. and/or its subsidiaries. In California, we construct our homes through our wholly owned subsidiary, TRI Pointe Contractors, LP—CA Contractor's License No. 952499. The exclusive broker of TRI Pointe Homes is TRI Pointe Communities Inc.—CA BRE License # 01888935. © 2017 TRI Pointe Homes, Inc. 4/17