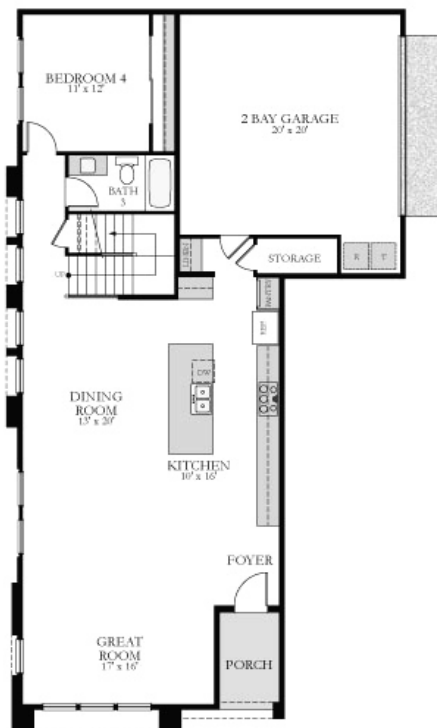


Windchime

LENNAR

PLAN 5

2,635 sq. ft. | 4 Beds | 3 Baths | Master Deck | 2-Car Garage | Two-story



FIRST FLOOR



SECOND FLOOR

LENNAR®

lennar.com

Parasol Park™
At Great Park Neighborhoods 

Plans and elevations are artist's renderings and may contain options which are not standard on all models. Lennar reserves the right to make changes to these floor plans, specifications, dimensions and elevations without prior notice. Stated dimensions and square footage are approximate and should not be used as representation of the home's precise or actual size. Any statement, verbal or written, regarding "under air" or "finished area" or any other description or modifier of the square footage size of any home is a shorthand description of the manner in which the square footage was estimated and should not be construed to indicate certainty. Lennar Homes of California, Inc. License #728102. Lennar Sales Corp.—California Bureau of Real Estate License #01252753.