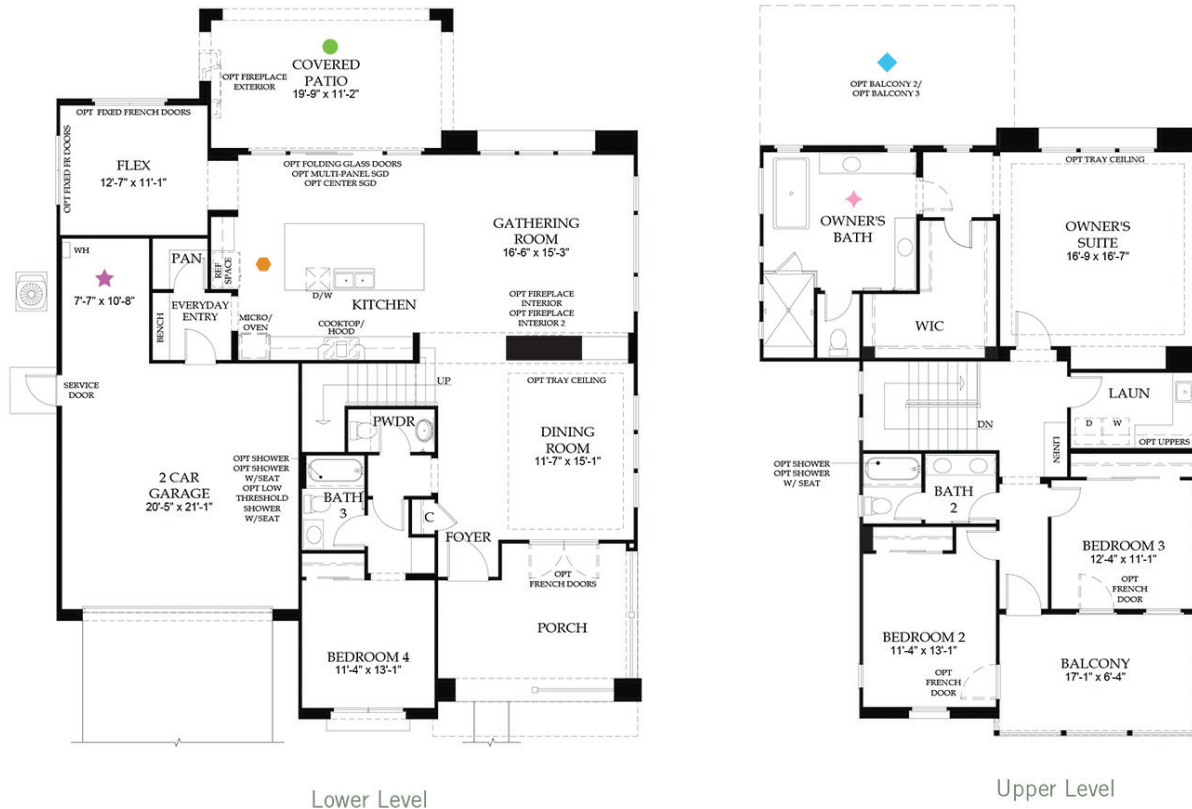


# Juniper

PULTE HOMES

HICKORY

2,897 sq. ft. | 4 Beds | 3.5 Baths | 2-Car Garage | Two-story



pulte.com

Beacon Park<sup>SM</sup>  
At Great Park Neighborhoods

Prices listed are base prices, do not include lot premiums or upgrades and are subject to change without notice. Square footage listed is approximate. This material shall not constitute a valid offer in any state where prior registration is required or if void by law. Photographs and illustrations are for illustrative purposes only, are not intended to be an actual representation of a specific home being offered and depict models containing features or designs that may not be available on all homes or that may be available for an additional cost. Please see a sales associate for details. Pulte Home Corporation is a licensed California real estate broker (lic. #00876003) ©2015 Pulte Home Corporation. All rights reserved. 5/5/2015